

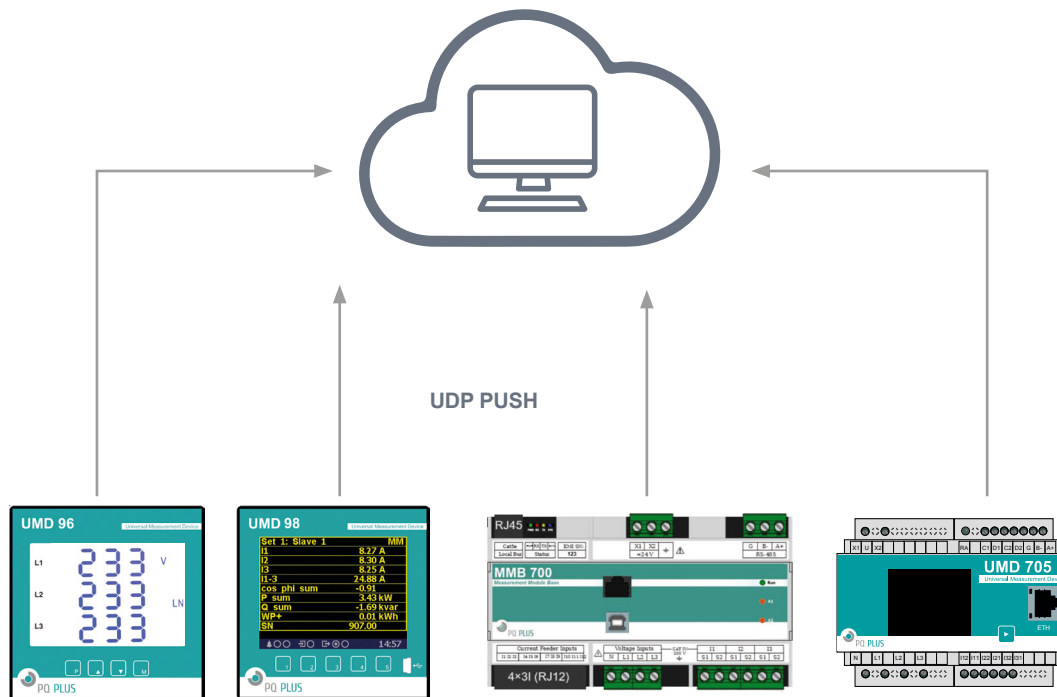
Download data sheet



## UDP Push

The UDP Push (UP module) transmits a defined interval of values of selected variables to a specified server via the Ethernet interface of the device. The data receiver can be a normal device for front panel installation with a display on the cabinet door to show the current values, as well as a publicly accessible dedicated server. The UP module uses a simple open communication protocol via UDP and does not require any incoming data

(queries) on the server side in order to transfer data. The UP module also activates user-defined functions for reading out archive values via Modbus RTU or TCP on selected devices with internal memory.



Designation	Description	Availability	Order no.
UDP Push	UDP Push	See technical specifications	52.21.1343