

KBR - Cable conversion transformer

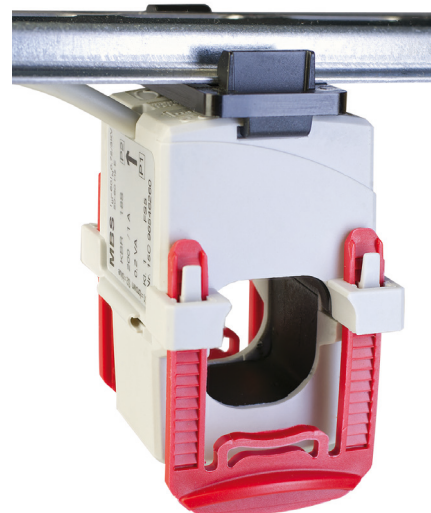
Download
data sheet



With its separable measuring core, the KBR series cable transformer enables retrofitting of existing systems. The KBR covers rated currents secondary in 5 A and 1 A and rated currents primary from 50 A to 1000 A. The accuracy classes are 1 and 3.

For installation, the locking mechanism of the transformer is opened, the transformer is placed around the primary conductor and audibly engaged again. After connecting the secondary lines, the measuring set-up is immediately ready for operation.

- Cable transformers are mainly used for retrofitting in order to avoid cutting the primary conductors.
- Due to its dimensions and easy handling, the compact KBR cable converter is particularly suitable for use in places that are difficult to access or where space is limited.
- The “click” system in conjunction with the fixing clips even allows for “one-handed” installation.
- As standard, the secondary 1 A version is delivered with 2.5 m connection line (colour-coded; S1 = brown; S2 = blue). The secondary 5 A version is supplied with a 0.5 m connection line.
- other cable lengths are possible on request.
- For use as a current sensor, the KBR is optionally available with 0 ... 333 mV voltage output available (min. load resistance $\geq 1 \text{ k}\Omega$)
- The KBR 32 and KBR 44 are also available as measuring transducers with a measuring output of 4 ... 20 mA DC
- Working temperature range: -5 ... 50 °C
- Storage temperature range: -25 ... 70 °C



Type	Power range	Round conductor	Dimensions (W x H x D)
KBR 18S	60 ... 250 A	18.5 mm	36 x 51.1 x 50 mm
KBR 18	60 ... 250 A	18.5 mm	41.6 x 64.5 x 68 mm
KBR 18L	100 ... 250 A	18.4 mm	49 x 68.8 x 59 mm
KBR 28	200 ... 500 A	27.9 mm	49 x 68.2 x 59 mm
KBR 32	100 ... 600 A	32.5 mm	59.2 x 96.4 x 90 mm
KBR 42	250 ... 1000 A	42.4 mm	67 x 96 x 59 mm
KBR 42L	250 ... 1000 A	2 x 42.4 mm	67 x 139 x 69 mm
KBR 44	150 ... 1000 A	44.0 mm	72.2 x 120.6 x 98 mm

PQ Plus also offers the complete KBR transformer series as XKBR for measurements up to 20 kHz, which on the one hand ensures highly accurate transmission up to 20 kHz and on the other hand is thermally designed for use in networks subject to harmonics. The output signals are 1 or 5 A, as usual for inductive transformers according to IEC 61869-2. The power specifications also correspond to the usual values. The transformer can therefore also be used in conventional 50 Hz applications. The frequency transmission behaviour is defined via an additional rating plate.

Further information on the XKBR is available on request, in our brochure “Transformers” and on our homepage.

KBR - Cable conversion transformer

KBR 18S

Primary current [A]	Secondary current [A]	Load [VA]	Class	Item number
60	1	0.4	3	03.18S.0001
75	1	0.5	3	03.18S.0002
100	1	0.75	3	03.18S.0003
150	1	1	3	03.18S.0005

KBR 18

Primary current [A]	Secondary current [A]	Load [VA]	Class	Item number
50	1	1	3	03.18.0001
75	1	1	3	03.18.0006
100	1	1.25	3	03.18.0011
200	1	1	1	03.18.0027

KBR 18L

Primary current [A]	Secondary current [A]	Load [VA]	Class	Item number
100	1	0.3	1	03.18L.0001
150	1	1	1	03.18L.0003
200	5	1.5	1	03.18L.5002
250	5	1	0.5	03.18L.5003

KBR 28

Primary current [A]	Secondary current [A]	Load [VA]	Class	Item number
250	1	1	1	03.28.0002
250	5	1	1	03.28.5001
400	1	2.5	1	03.28.0005
400	5	2.5	1	03.28.5003

KBR 32

Primary current [A]	Secondary current [A]	Load [VA]	Class	Item number
100	5	1.5	3	03.32.5011
200	1	5	3	03.32.0026
400	5	5	1	03.32.5037
600	1	5	1	03.32.0041

KBR 42

Primary current [A]	Secondary current [A]	Load [VA]	Class	Item number
400	1	5	1	03.42.0004
500	5	5	1	03.42.5003
600	5	5	1	03.42.5005
1000	1	5	1	03.42.0014

KBR 42L

Primary current [A]	Secondary current [A]	Load [VA]	Class	Item number
400	5	5	1	03.42L.5002
500	5	5	1	03.42L.5003
600	5	5	1	03.42L.5005
1000	5	5	1	03.42L.5011

KBR 44

Primary current [A]	Secondary current [A]	Load [VA]	Class	Item number
400	5	5	1	03.44.5011
500	5	5	1	03.44.5016
750	5	5	1	03.44.5026
1000	5	5	1	03.44.5036